

45/100

TOWN PLACE CLUB VILLAS

A PART OF VIAVERDE P.U.D.
BEING A PORTION OF SECTION 23, TOWNSHIP 47 SOUTH, RANGE 42 EAST,
PALM BEACH COUNTY, FLORIDA.

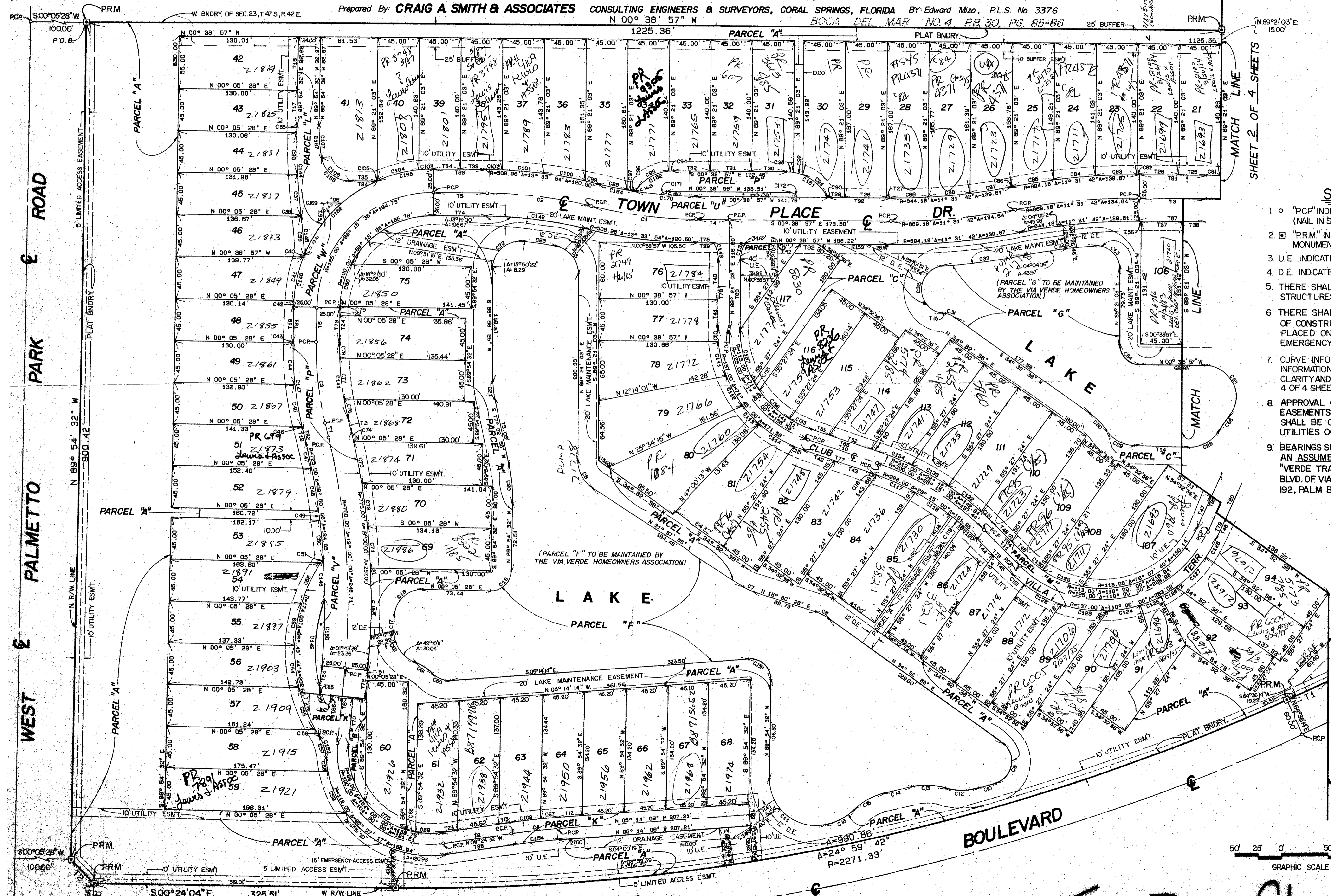
100

STATE of FLORIDA.
COUNTY of PALM BEACH

THIS PLAT WAS FILED FOR
RECORD AT _____ ON THE
_____ DAY OF _____
1982, AND DULY RECORDED IN
PLAT BOOK _____ PAGES

JOHN B. DUNKLE
CLERK of CIRCUIT COURT

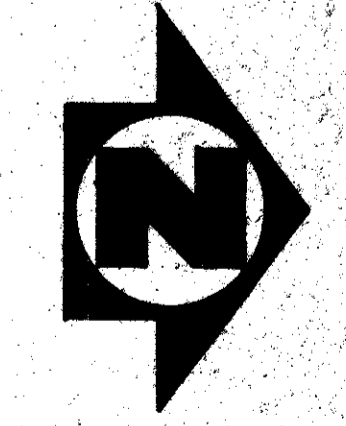
SHEET 3 OF 4 SHEETS



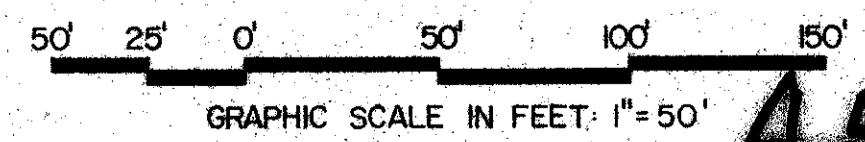
SURVEY NOTES

1. "PCP" INDICATES PERMANENT CONTROL POINT (NAIL IN SURVEY CAP)
2. "PRM" INDICATES PERMANENT REFERENCE MONUMENT.
3. U.E. INDICATES UTILITY EASEMENT.
4. D.E. INDICATES DRAINAGE EASEMENT.
5. THERE SHALL BE NO BUILDINGS OR OTHER STRUCTURES PLACED ON UTILITY EASEMENTS.
6. THERE SHALL BE NO BUILDINGS OR ANY KIND OF CONSTRUCTION OR TREES OR SHRUBS PLACED ON DRAINAGE EASEMENTS OR THE EMERGENCY ACCESS EASEMENT.
7. CURVE INFORMATION (eg. "C81") AND STRAIGHT LINE INFORMATION (eg. "T25") HAVE BEEN TABULATED FOR CLARITY AND ARE GIVEN IN THE TABLE ON SHEET 4 OF 4 SHEETS
8. APPROVAL OF LANDSCAPING ON UTILITY EASEMENTS OTHER THAN WATER AND SEWER SHALL BE ONLY WITH THE APPROVAL OF ALL UTILITIES OCCUPYING SAME
9. BEARINGS SHOWN HEREON ARE BASED UPON AN ASSUMED MERIDIAN AS SHOWN ON "VERDE TRAIL SOUTH AND SAINT ANDREWS BLVD. OF VIA VERDE - P.U.D." PB. 35, PG. 190-192, PALM BEACH COUNTY RECORDS.

SHEET 2 OF 4 SHEETS



0323-013



Town Place Club Villas